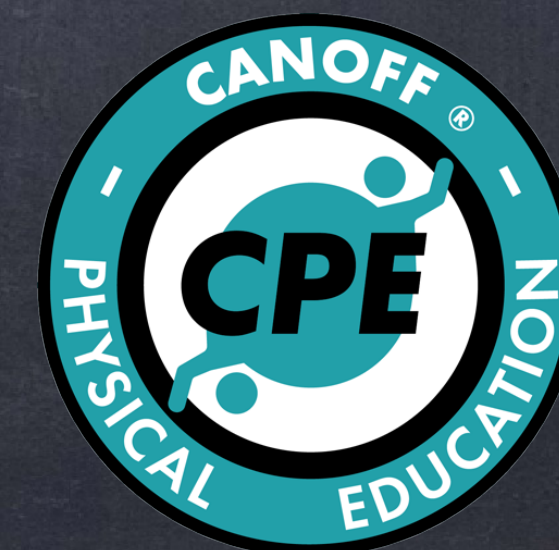
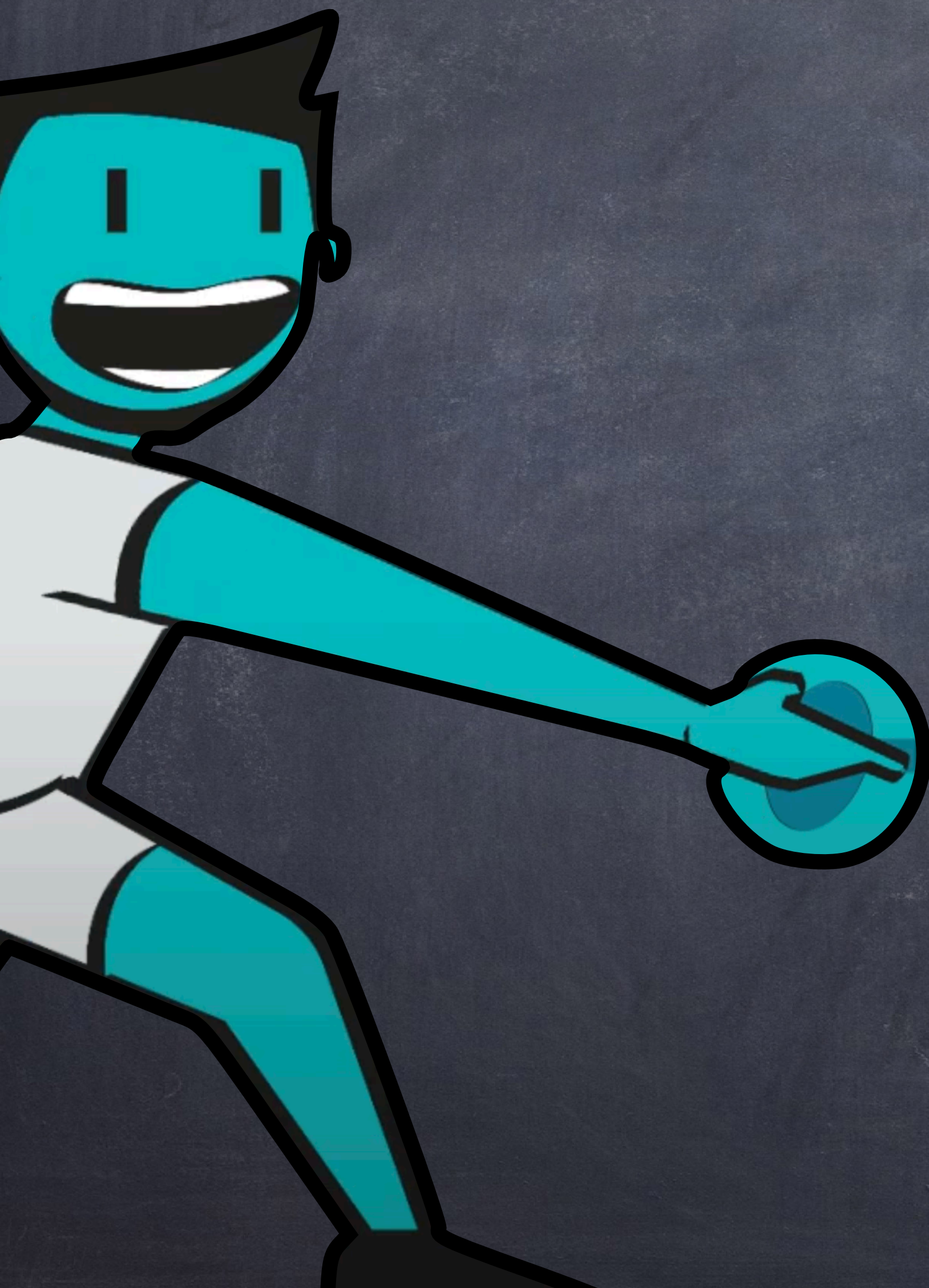
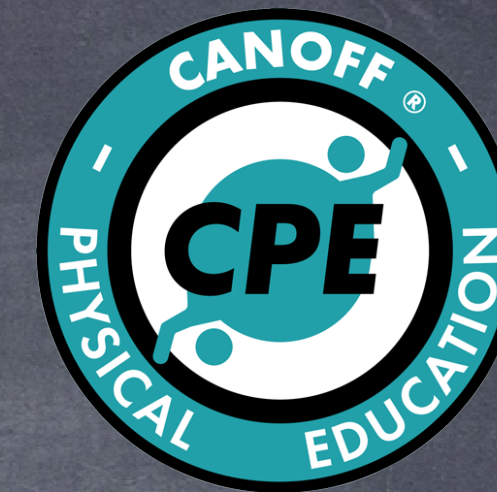


Can-Off: Session Eight



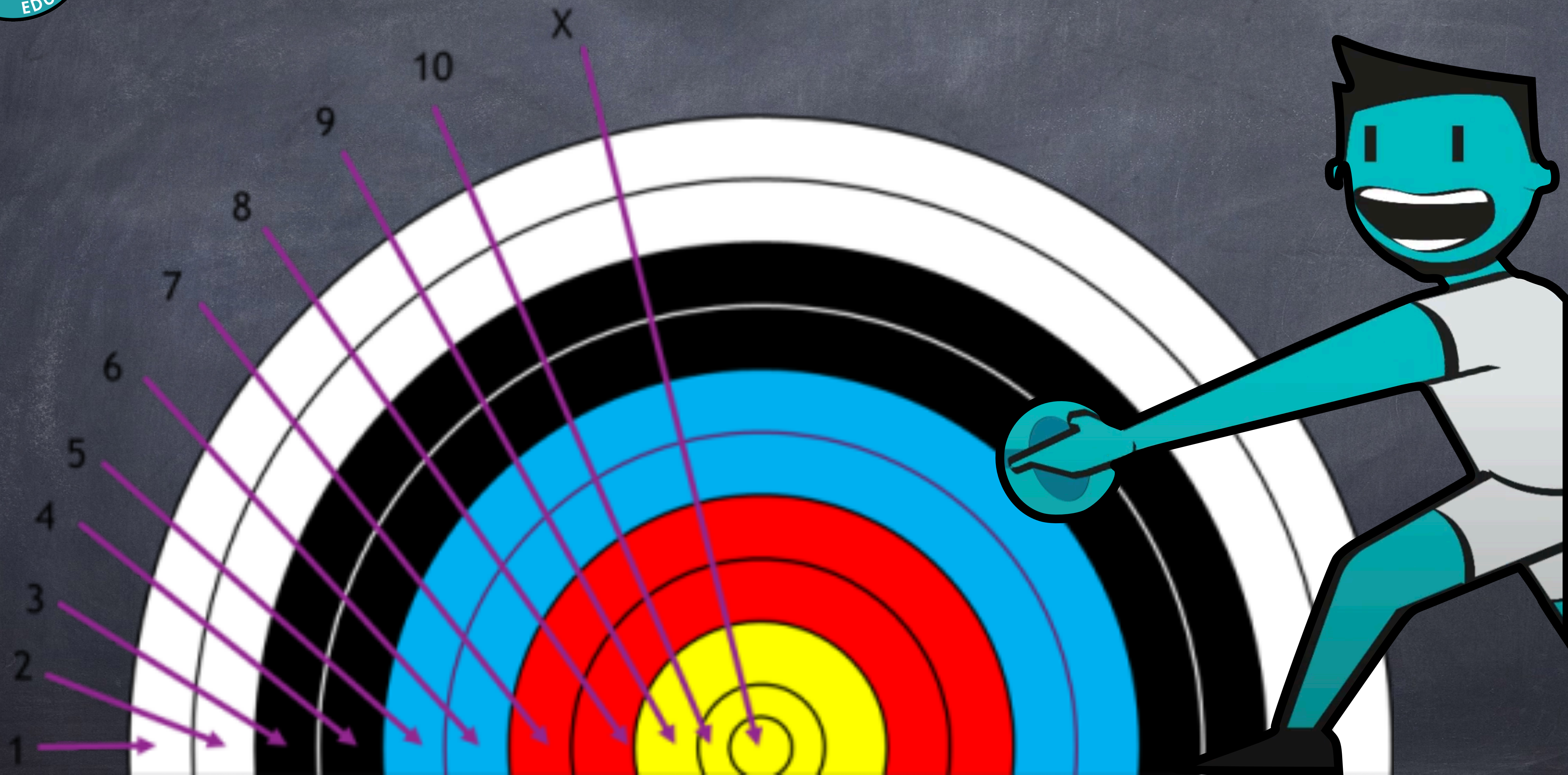
Can-Offchery



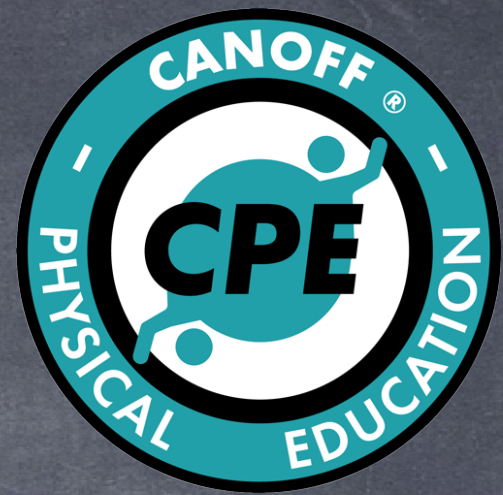
Following the form of clout archery, frisbees are thrown high into the air to land flat on the target.

The closest section of the frisbee to the bullseye scores the points on each turn.

There are ten ends with two frisbee per turn.



Can Offchery Scores



End	Emily	Seren	Evan	Anastasiya	Mr Pile	Jessica	Freddie	Adam
1	4	4	4	4	4	4	4	4
2	4	4	4	4	4	4	4	2
3	4	6	4	4	4	4	2	4
4	4	4	4	4	4	4	8	4
5	4	6	4	4	4	4	4	10
subtotal	20	24	20	20	20	20	22	24
6	4	12	4	4	4	4	4	10
7	4	10	4	4	4	6	4	4
8	4	4	4	4	4	4	4	4
9	4	4	4	4	4	4	10	4
subtotal	32	54	32	32	32	38	44	46
10	4	12	4	4	4	4	4	4
total	36	66	36	36	36	42	48	50
BONUS	66	66	66	66	72	66	78	54
FINAL TOT	102	132	102	102	108	108	126	104

End	Name
1	Seren-Rose
2	Freddie
3	Jessica
3	Mr Pile
5	Adam
6	Evan
6	Anastasiya
6	Emily